

NOVAGLASS.COM

NOVAGLASS WATERPROOFING MATERIALS

EASYGUM

QUINA LIQUIDA ELASTOMERO BITUMINOSA ALL'ACQUA

Le impermeabilizzazioni devono essere sane e pulite, vanno quindi eliminate le parti friabili e non aderenti. EASYGUM va applicata in strati ad 1 mm per ogni mano. La prima mano va diluita con il 5% di acqua. La seconda mano va applicata tale e quale o diluita con il 5% di acqua. La terza mano va applicata tale e quale. Il consumo varia da 1 a 2 kg/m² a seconda dell'uso. EASYGUM ha una resistenza all'abrasione di 100-150 gr/m² per aumentare la resistenza dell'impermeabilizzazione. Per aumentare la durata del nostro impermeabilizzante EASYGUM bisogna verniciarlo a distanza di 15-20 giorni con la nostra Vernice Alluminio in solvente o dopo 7 giorni con la nostra Vernice Acrilica grigia o rossa Colora.

MAI IL PRODOTTO IN CONDIZIONI ATMOSFERICHE AVVERSE, IN IMMINENZA DI PIOGGIA E CON TEMPERATURE INFERIORI AI +5°C. PRIMA DELL'USO. SUO IMBALLO TEME IL GELO. Contenuto netto kg 18,450

IMPERMEABILIZZANTE ECOLOGICO PER L'EDILIZIONE

NOVAGLASS.COM

EASYGUM ADHESIVE / DICHTMASSE-KLEBER / SCELLANT-COLLANT



EASYGUM

ECO-FRIENDLY
LIQUID WATERPROOFING

WATER-BASED LIQUID APPLIED BITUMEN MEMBRANE

An ideal partner for polymer-bitumen membrane sheets

EASYGUM



Easy to apply – with a brush, mop, roller, trowel, or spray

It adheres to any material, damp surfaces included

UV-ray resistant

Aging resistant

Ponding water resistant

High and low temperature resistant (-20°C to 140°C, or -4°F to 284°F)

EASYGUM is an ecologic, water-based product

Ideal for:

Waterproofing structures of any shape or material;

Protecting and sealing metal surfaces, even if rusty;

Sticking all kinds of insulating panels to concrete or air-permeable surfaces;

Repairing old damaged waterproofing;

Refurbishing old balconies and terraces - the EASYGUM System means there is no need to dismantle the old flooring;

Waterproofing bathrooms and other damp environments (coat thickness: 1-2 mm).

EASYGUM

WATER-BASED LIQUID APPLIED BITUMEN MEMBRANE

introduction

EASYGUM is a ready-to-use, semi-dense, thixotropic black paste. It is made up of an emulsion of selected distilled bitumen blend, additives and special rubbers, which deliver the product - once dried - its extraordinary properties: watertightness, adhesion, elasticity, and resistance to aging, UV rays, and atmospheric agents. Once thoroughly cured (after 15 to 20 days), EASYGUM will not wash out – not even in the case of continuous contact with water; it will not melt at high temperatures (heat resistance: $>140^{\circ}\text{C}$, or $>284^{\circ}\text{F}$); and it will not crack at low temperatures (cold flexibility: -20°C , or -4°F).

field of use

EASYGUM is a new and environmentally friendly water-based product. It can be used to waterproof, protect and seal all metal surfaces; to stick all kinds of insulating panels to concrete or air-permeable surfaces; and also to repair damaged old waterproofing layers.

EASYGUM is therefore your best choice in a number of situations (no skilled labour necessary). It is ideal for plenty of uses:

- waterproofing concrete terraces (both old and new), foundation and retaining walls, and irregularly-shaped surfaces;
- rust and water-proofing old and new metal sheets, gutters, underground and overground tanks, and any metal structure to be protected against atmospheric agents;
- waterproof sealing between metal and metal, metal and cement, metal and glass, cement and cement, bitumen and cement, etc.;
- sticking all kinds of insulating panels to concrete, plaster, air permeable surfaces, or to any surface allowing vapour to pass and the glue to dry - EASYGUM is waterproof and resistant to high and low temperatures;
- repairing old bitumen membranes;
- refurbishing old balconies without dismantling the previous flooring.

instructions

Surfaces to be treated with EASYGUM must be perfectly intact and clean: loose parts and crumbling parts need to be removed. EASYGUM can be applied with a brush, roll, mop or spray (with suitable airless devices). Each coat of EASYGUM should not be more than 1mm thick, or the drying process will be very slow. EASYGUM can be applied to damp surfaces, as long as there is no stagnant water. In the case of soaked slabs, condensation will form underneath the waterproof layer: suitable exhaling ducts must be installed to prevent blisters. Once thoroughly cured (after 15 to 20 days), EASYGUM will not be damaged by ponding water. Application temperature must be $+5^{\circ}\text{C}$ to $+40^{\circ}\text{C}$ ($+41^{\circ}\text{F}$ to 104°F).

technical characteristics

COMPOSITION	Fillerised bituminous emulsion and synthetic rubbers
PRODUCT TYPE	Single component ready to use
VISCOSITY	Thixotropic
DENSITY	1.05 kg/dm ³
SOLID CONTENT	65 %
FLAMMABILITY	Not flammable
REACTION TO FIRE	Class F
MINIMUM APPLICATION TEMPERATURE	+5°C or +41°F (during the night, too)
ELONGATION AT BREAK POINT	1000 %
RESISTANCE TO HIGH TEMPERATURES	>140°C or >284°F
COLD FLEXIBILITY	-20°C, or -4°F
WATER IMPERMEABILITY	72 h at 0.075 N/mm ²
COLOUR	Black
SHELF LIFE	1 year from production date (provided it is in its original package, perfectly closed and kept away from excessive cold or heat)

WATER VAPOUR TRANSMISSION PROPERTIES 85,00 µ

Warning

Carefully stir EASYGUM before usage.

Do not allow EASYGUM in its package to freeze. If it freezes, it can no longer be used.

Do not apply EASYGUM in cold and rainy weather: when still damp, it can be washed out by rain or damaged by frost.

When cleaning tools, first use water and then any ordinary solvent, such as mineral turpentine or trichloroethylene.

CERTIFICATIONS



REACTION TO FIRE



WATER IMPERMEABILITY



WATER VAPOUR TRANSMISSION PROPERTIES

EASYGUM: FIELDS OF USE



Waterproofing
irregular surfaces

Protect from rust
and waterproof
any metal surfaces



Restoration and
ordinary maintenance



Sticking insulating panels to air-permeable surfaces (cement, wood)

Extraordinary repairs to old bitumen membranes



Finishing of technical detail (on damp or dry surfaces)



Refurbishing old bitumen membranes

Application by means of airless device



Waterproofing large surfaces



Some waterproofing jobs are sometimes carried out by applying poor quality bitumen torch-ons. But after a few years problems can arise, due to mechanical stress coming from slabs and other factors: this means butt and side joints between membrane sheets could crack, causing leaks in the rooms below.

EASYGUM, our liquid elastomeric water-based bituminous membrane, together with our non-woven polyester fleece SUPPORTO ANTIFESSURA (100 g/m² - try the 25 cm x 50 m roll) will help you with this kind of repairs. The process is:

- **easy:** because EASYGUM is a ready-to-use water-based single component product, which can be applied with a brush or a roller.
- **cheap:** there is no need to treat the whole surface – just cracked weldings. Alternatively, in order to prevent future problems, only butt and side joints between membrane sheets can be treated. This reduces the surface to be treated to one fourth of the waterproofed area.
- **guaranteed:** resistant to UV rays, aging, stagnant water, and high and low temperatures (-20° to +140°C, -4°F to 284°F).



Use EASYGUM to stick SUPPORTO ANTIFESSURA (non-woven polyester fleece, 100 g/m², 25 cm x 50 m roll) in the middle of the welding to be repaired.

Apply one coat of EASYGUM to SUPPORTO ANTIFESSURA, thoroughly saturating it.



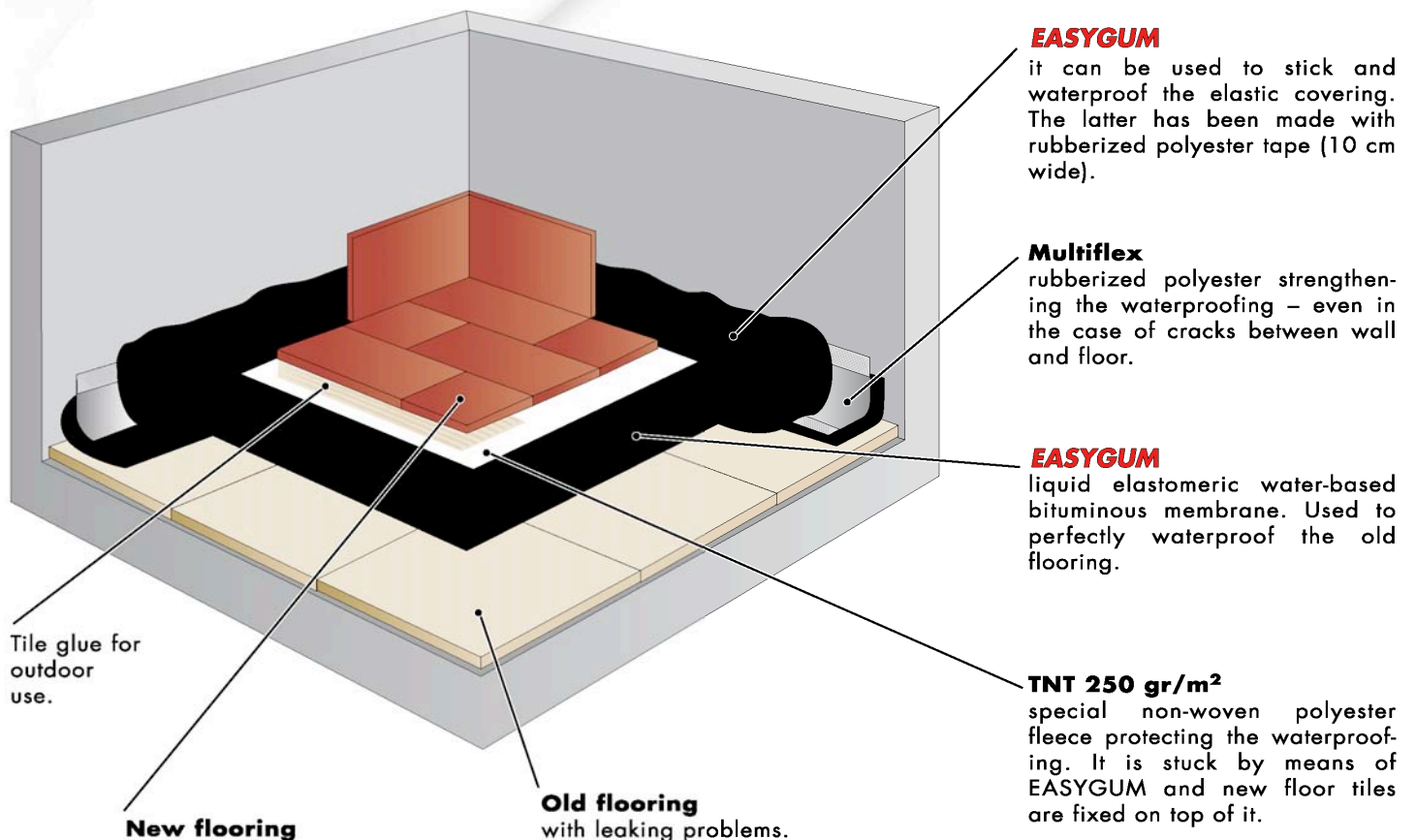
EASYGUM SYSTEM

It is a way to refurbish balconies and terraces without dismantling the previous flooring

It is simple, practical and cheap, carefully designed and largely tested. It can also be used in new terraces, when the standard 5cm footing cannot be employed due to limited thickness.

EASYGUM System for small balconies (max 3 m)

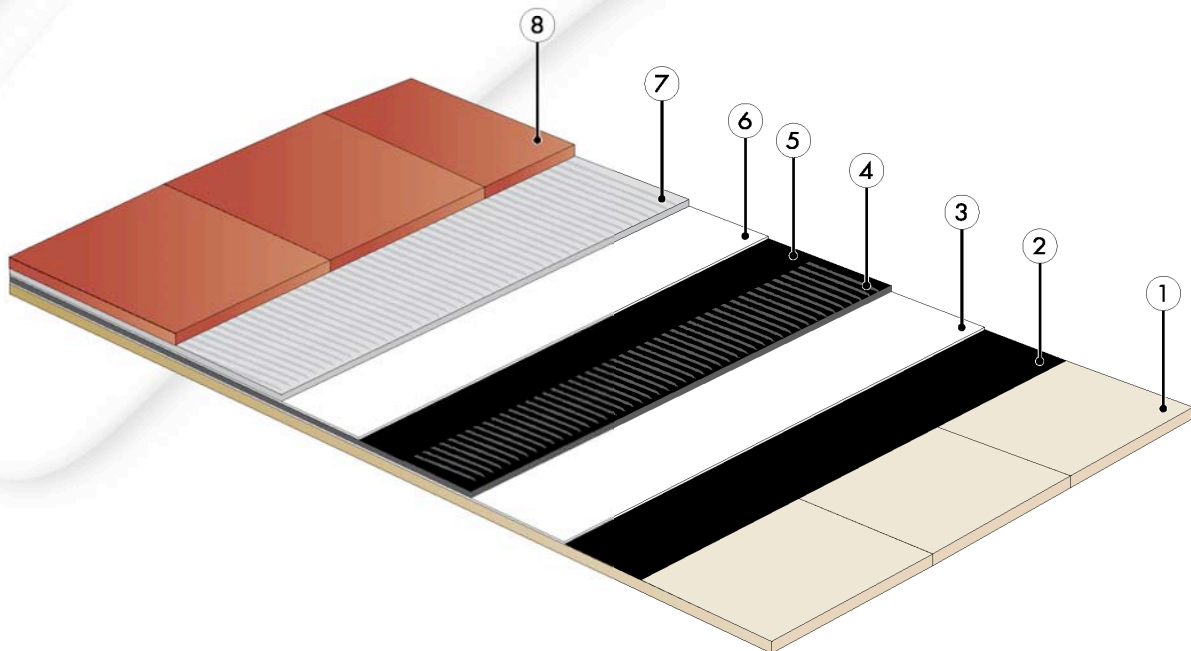
- 1) remove the skirting boards and accurately clear the balcony from earth, dust and loose parts;
- 2) repair any missing parts with an additivated cementitious mortar;
- 3) use EASYGUM to stick one half of a 10 cm rubberized polyester tape to the horizontal surface and one half to the vertical wall, so as to strengthen the wall/floor joint. Then apply a first coat of EASYGUM with a roller or a brush (1 kg/m²). After about 24hours, a second coat of EASYGUM can be applied (1 kg/m²);
- 4) in order to fix floor tiles over the waterproofing, use EASYGUM (0.5 kg/m²) to stick some TNT 250 g/m² (non-woven polyester fleece) to the dried waterproofing layer;
- 5) after a few days, floor tiles can be stuck to the TNT 250 g/m² with good-quality solvent-free tile glue suitable for outdoor use.



EASYGUM SYSTEM

EASYGUM System for large terraces (more than 3 m)

- 1) old flooring: water leaks in the slab (cement screed in the case of new balconies);
- 2) EASYGUM used to stick non-woven polyester fleece TNT 250 g/m² onto the previous layer. Consumption: 500 g/m²;
- 3) special non-woven polyester fleece TNT 250 g/m² (1mm thick), used to strengthen the waterproofing of large terraces (more than 3 m);
- 4) waterproofing carried out with EASYGUM. Apply two coats (allow for 24 hours before applying the second coat). Consumption: 1 kg/m² per coat (2 kg/m² altogether);
- 5) EASYGUM used to stick non-woven polyester fleece TNT 250 g/m² onto the previous layer. Consumption: 500 g/m²;
- 6) special non-woven polyester fleece TNT 250 g/m² (1 mm thick), used as a porous support for the adhesion of the glue for the new covering tiles;
- 7) ordinary solvent-free tile glue suitable for outdoor use;
- 8) new covering tiles, to be sealed with suitable waterproof joint sealant, so as to avoid water absorption (water could freeze in winter time, which could result in the detaching of tiles).



Unlike other systems, EASYGUM System allows to choose between:

- WATERPROOFING AND IMMEDIATELY FIXING THE TILES
- WATERPROOFING AND FIXING THE TILES AT A LATER STAGE – NO TIME LIMITS

The aim is testing the waterproof seal of the terrace before fixing the new flooring.
Carefully follow the instructions.

CAUTION: Do not apply EASYGUM in cold and rainy weather – when still damp, it can be washed out by rain or damaged by frost. Minimum application temperature: +5°C or + 41°F (during the night, too).

EASYGUM REINFORCEMENTS

EASYGUM must always be coupled with suitable reinforcements for a longer-lasting result. Choose the most suitable reinforcement among the ones below:

1) **TNT 250**

non-woven polyester (250 g/m²).
Ideal to reinforce EASYGUM waterproofings, when the latter are to be covered with a floor or a cement footing. This kind of reinforcement is also used in our EASYGUM System in order to fix flooring tiles onto the EASYGUM waterproofing (roll size available: 1x50 m).

2) **Supporto Antifessura**

("Anti-cracking reinforcement") non-woven polyester (100 g/m²).
Ideal to reinforce EASYGUM waterproofings, when the latter are meant to remain visible, or in the case of retaining walls (roll sizes available: 1 x 50 m, 50 cm x 50 m, 25 cm x 50 m).

3) **Multiflex, rubberized polyester reinforcement tape**

ideal to preserve the EASYGUM System waterproof seal in corners and wall/floor joints, etc. (roll size available: 10 cm x 50 m).

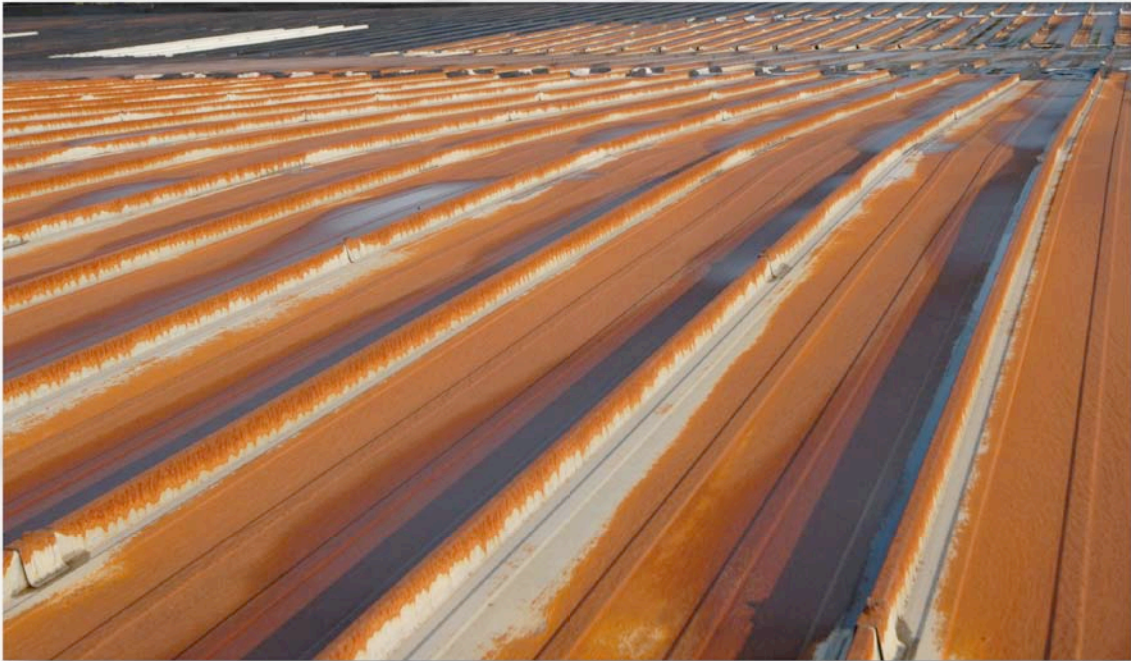


REFURBISHMENT OF OLD METAL SURFACES

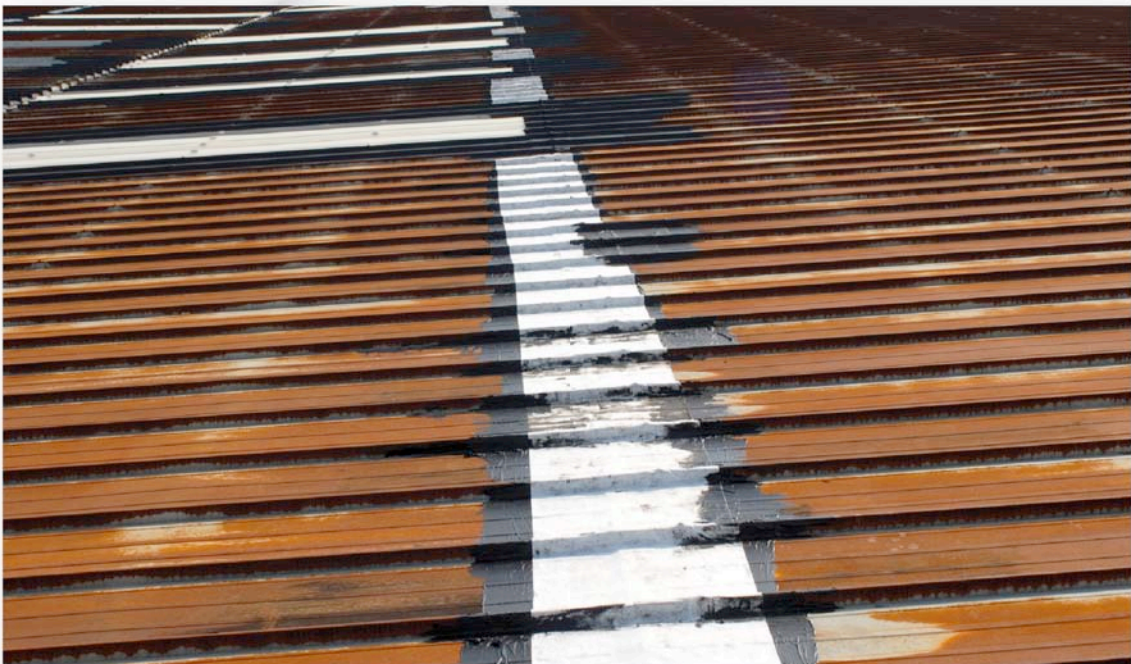
An example: complete refurbishment of an old metal surface covered in rust and damaged by water seepage

Work phases:

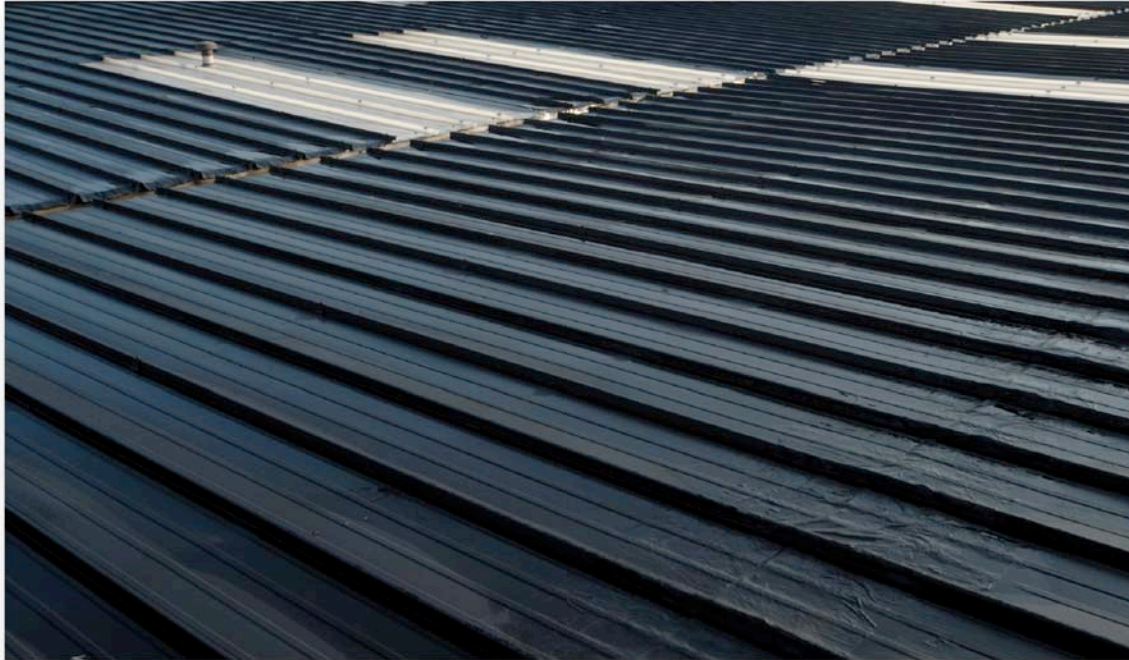
- 1) clean by means of a high pressure hydro-cleaner to remove rust, dirt, etc.
- 2) use EASYGUM to stick non-woven polyester fabric to the joints between metal sheets
- 3) apply two coats of EASYGUM by spray (allow for 48 hours before applying the second coat)
- 4) apply one coat of VERNICE ALLUMINIO ("aluminium paint") by spray 20 days after applying EASYGUM



A metal covering before our refurbishment



EASYGUM used to stick anti-cracking reinforcement (polyester TNT 100 g/m², 50 cm wide) to the joints between metal sheets or over holes



Metal covering treated with two coats of EASYGUM (allow for 48 hours before applying the second coat; apply by spray; total consumption: 1 kg/m²)



Metal covering after the final treatment - a coat of VERNICE ALLUMINIO has been applied 20 days after the second coat of EASYGUM (apply by spray; total consumption: 200 g/m²)

EASYGUM: APPLICATION INSTRUCTIONS

1) Ideal weather conditions for the application of EASYGUM

- EASYGUM is a water-based product. It is therefore sensitive to frost and rain until the water it contains has evaporated.
- EASYGUM must be applied at a temperature of at least +5°C (+41°F).
Weather conditions must be ascertained before starting to apply the product. This is crucial, as freshly-applied EASYGUM must not come into contact with rain.
- Once it has dried for 24-48 hours, EASYGUM is well resistant to rain.

If freshly-applied EASYGUM comes into contact with rain, it will be washed out and it will have to be re-applied!

2) Surfaces to be treated

- EASYGUM is a paint. As such, it must be applied to clean surfaces. Dust, loose parts and crumbling parts must be removed.
- Surfaces to be treated can be damp or slightly wet, but puddles or stagnant water would dilute the product and must be avoided.

3) Diluting and tools

- EASYGUM must always be stirred before use.
- EASYGUM is a semi-dense product which becomes fluid if manually stirred.
- For an easier application, dilute with 5% water (1.5 litres of water for a 30 kg EASYGUM can, 1 l for a 20 kg can, 0.5 l for a 10 kg can, 250 ml - approx 1 glass - for a 5 kg can, 50 ml for a 1.2 kg can).
- EASYGUM can be applied with a brush, roller or suitable Airless device.

4) EASYGUM reinforcements

EASYGUM must always be coupled with suitable reinforcements for a long-lasting result.

5) How to apply EASYGUM reinforcements

EASYGUM can be used to apply TNT 250 g/m², SUPPORTO ANTIFESSURA or rubberized tape:

- place the roll of reinforcement on the surface to be treated.
- with a flat brush, apply some EASYGUM in front of the reinforcement (approx. 0.5 kg/m²). Immediately start unrolling the reinforcement and press it into EASYGUM, letting the paste soak the fabric.

6) Painting

EASYGUM is UV ray- and aging-resistant, and as such it doesn't need to be protected. However, a varnish can be used for aesthetic reasons, or in order to limit heat absorption (EASYGUM is black):

1) **COLORA**, our non-acrylic water-based synthetic paint (available in red or gray), can be applied after at least 2-3 days. Apply one coat of **COLORA** by brush or roller (consumption: 250 g/m²).

2) **VERNICE ALLUMINIO**, our aluminium paint, can be applied after 15-20 days. Apply one coat of **VERNICE ALLUMINIO** by brush or roller (consumption: 100-150 g/m²).

7) Approximate EASYGUM consumption

- Concrete surfaces: 1.5-2 kg/m² - two coats (allow for 24 hours before applying the second coat) with non-woven polyester fabric SUPPORTO ANTIFESSURA (100 g/m²).
- Old bituminous membranes: 1.5-2 kg/m² - two coats (allow for 24 hours before applying the second coat) with non-woven polyester fabric **SUPPORTO ANTIFESSURA** (100 g/m²).
- Metal surfaces: 1-0.5 kg/m² - two coats (allow for 48 hours before applying the second coat, as the drying process is slower on metal).
- EASYGUM System for small balconies (max 3 m): 2 kg/m², plus non-woven polyester fabric TNT 250 g/m² to fix flooring tiles on.
- EASYGUM System for large terraces (more than 3 m): 2.5 Kg/m², plus two layers of TNT 250 - one to strengthen EASYGUM, the other to fix flooring tiles on. For a longer-lasting result, EASYGUM can be varnished: use **COLORA**, our non-acrylic water-based synthetic varnish available in red or gray (allow for 48-72 hours after applying EASYGUM), or **VERNICE ALLUMINIO** (allow for 15-20 days after applying EASYGUM).

8) Stocking and shelf life

Do not allow EASYGUM to freeze in its package. If it freezes, it can no longer be used. It is therefore to be stored at a minimum temperature of +5°C or +41°F.

If kept in its original package and perfectly closed, EASYGUM has a shelf life of about one year.

WARNING

- Do not apply EASYGUM in cold and rainy weather: when still damp, it can be washed out by rain or damaged by frost.
- Do not apply EASYGUM on hot surfaces: the water it contains would evaporate too quickly and the product would be at risk of overheating (as can happen to cement mortars). This would cause adhesion problems and compromise the waterproofing seal.

During summer months, apply EASYGUM in the early morning, especially if it is to be applied to metal surfaces. Avoid afternoons - they are too hot.

- Do not apply EASYGUM at a temperature below +5°C or +41°F.
- EASYGUM needs to dry for at least 24-48 hours, or it might be washed out by rain.
- EASYGUM waterproofings are not treadable surfaces. They can be trodden on only occasionally for ordinary maintenance. In order to become treadable, EASYGUM needs to be tiled (see EASYGUM System).
- In the case of EASYGUM waterproofings meant to come into direct contact with water (eg. basins and tanks), let them cure at least 20 days.

The same time-span is required if EASYGUM is to be covered with anything which might slow down the evaporation of its water content (eg. earth in flower boxes, concrete tiles in floating floors, gravel ballast in flat roof terraces, etc.).

- At the end of the day, used brushes and rollers must be soaked in water, so as to prevent the product from drying. On the following day, shake excess water away before re-using them. Once the job has been finished, tools have to be cleaned thoroughly, first with water, then with mineral turpentine.




**LIQUID WATERPROOFING
PRODUCTS**


**AIRLESS
APPLICATION
TECHNOLOGY**



NOVAGLASS
 VIA GATTOLÈ, 1 - 31040 SALGAREDA (TV) - ITALY
 TEL.: +39.0422.8084 - FAX: +39.0422.807655
 E-MAIL: INFO@NOVAGLASS.COM

NOVAGLASS.COM

Printed on paper certified CoC-FSC 000010 CQ Mixed sources

